

LZM Panel Type Flow Meters with Regulators

Models: LZM-xxZT, LZM-xxT
Material:
Body: Acrylic
Float & Rod: Stainless Steel
Adapter: PP
Accuracy: ± 4 %
Temperature: ≤ 60°C
Pressure: ≤ 10 Bar (1 MPA)

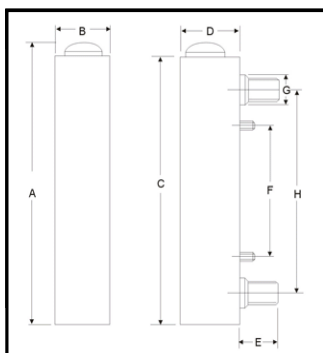


LZM-xxZT

LZM-xxT

Model	Measurement Range		Screw Thread	Size (mm)							
	LPM	GPM		A	B	C	D	E	F	G	H
LZM-15ZAT	15 - 150 LH			157	32	150	35	25	60	25	110
LZM-15ZT	10-100 LH		1/2" BSPT	175	32	168	35	25	76	25	127
	16-160 LH										
	25-250 LH										
	0.5 - 4	0.1 - 1									
	1 - 7	0.2 - 2									
LZM-25ZT	1 - 11	0.3 - 3	1" BSPT	234	45	226	46	33	100	37	160
	2 - 18	0.5 - 5									
	4 - 35	1 - 10									
	15 - 50	4 - 14									
	10 - 70	6 - 20									
LZM-25ZT	30 - 130	10 - 35	1" BSPT	234	45	226	46	33	100	37	160
	30 - 150	10 - 40									
	50 - 170	15 - 45									

Model	Measurement Range		Screw Thread	Size (mm)							
	LPM	GPM		A	B	C	D	E	F	G	H
LZM-15T	0.5 - 4	0.1 - 1	1/2" BSPT	216	32	206	37	36	100	28	165
	0.8 - 8	0.2 - 2									
	2 - 18	0.5 - 5									
LZM-20T	8 - 40	2 - 10	3/4" BPST	233	39	220	44	42	100	37	165
	8 - 60	2 - 16									
	8 - 80	2 - 20									
LZM-25T	10 - 50	3 - 13	1" BSPT	253	44	240	50	31	100	37	175
	20 - 100	6 - 24									
	30 - 130	10 - 35									
	30 - 170	10 - 45									



Ordering Specifications

Valve	Adapter	O-Ring
1 = SS	A = ABS P = Polypropylene PV = PVC B = Brass S = Stainless Steel	S = Silicone

LZM - Valve Model Measuring Range Adapter O-Ring